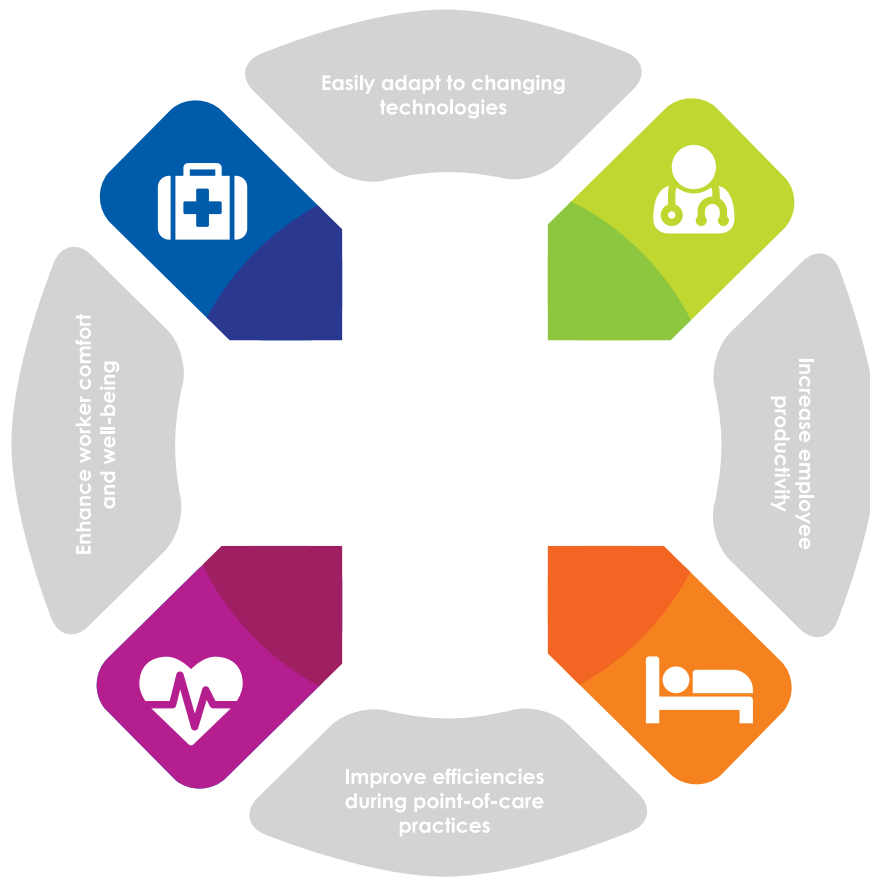


A modern, light-colored spiral staircase with a metal railing is the central focus of the image. The staircase is set against a background of large glass windows and doors, which provide a view of the outside world. Overlaid on the image is a large blue circle containing the word 'esi' in white lowercase letters. To the right of the blue circle is a smaller white circle containing a blue plus sign. Several colorful lines (purple, green, blue, orange) curve around the staircase, adding a dynamic and artistic touch to the composition.

# esi







Characterized by visionary product design and a passion for ergonomics, ESI produces a broad catalog of ergonomic work tools to enhance worker comfort, productivity, and wellness. ESI's high quality products are guaranteed by an industry-leading 15 year product warranty, and are sustainably designed to adapt to the ever-evolving workplace.

ESI is headquartered in Mesa, AZ.



**48**HOUR  
SHIPPING







## 15 YEAR WARRANTY

We guarantee our high quality ergonomic work tools with an industry-leading 15 year product warranty. View our warranty policy at [esiergo.com](http://esiergo.com) or contact our Customer Service Department for more information.



## AWARD-WINNING SERVICE

If you need assistance, please call us! We are happy to help answer your questions or provide product recommendations.



**Schedule**  
Contract GS-28F-0028Y

CONTRACT: GS-28F-0028Y

CAGE CODE: 1CTH6

DUNS#: 874792500

FEDERAL TAX ID#: 86-0955047

FSC GROUP: 71 Part 1 Office Furniture

FSC CLASS:

711-2 (Worksurfaces, Workstations, Computer Furniture & Accessories)

711-11 (Tables and Accessories)

711-95 (Office Furniture Installation Services)

## GOVERNMENT

ESI is proud to provide ergonomic work tools to federal, state, and local governments. The few products not available through GSA are designated as NON GSA.

Visit [esiergo.com](http://esiergo.com) for GSA pricing and a complete list of contracts, or contact our Customer Service Department to request a GSA catalog.



## ORDERING INFORMATION

Please e-mail your orders to  
[orders@esiergo.com](mailto:orders@esiergo.com)

## CUSTOMER SERVICE

Toll Free: 800.833.3746  
[customerservice@esiergo.com](mailto:customerservice@esiergo.com)

## LIVE CHAT

[esiergo.com](https://esiergo.com)



### LEAD TIME

The **LT** product marker indicates the Lead Time may vary depending on quantities ordered and availability. Contact our Customer Service Department for on-hand inventory when placing orders for products marked **LT**. Purchase Orders that include **LT** designated products will be shipped based on the lead time of the **LT** designated products. Split shipments are available for orders that include both **LT** and non-**LT** products.


## 48<sup>HOUR</sup> SHIPPING

We can fulfill orders in as little as 48 hours based on product on-hand availability. We do this by maintaining high levels of our most popular products so you can meet ambitious deadlines and schedules. Our exceptional fulfillment service ensures you get the products you want, when you want them. Unless otherwise specified, most of ESI's products ship within 2 business days after your order is placed and acknowledged.



### RESERVED INVENTORY

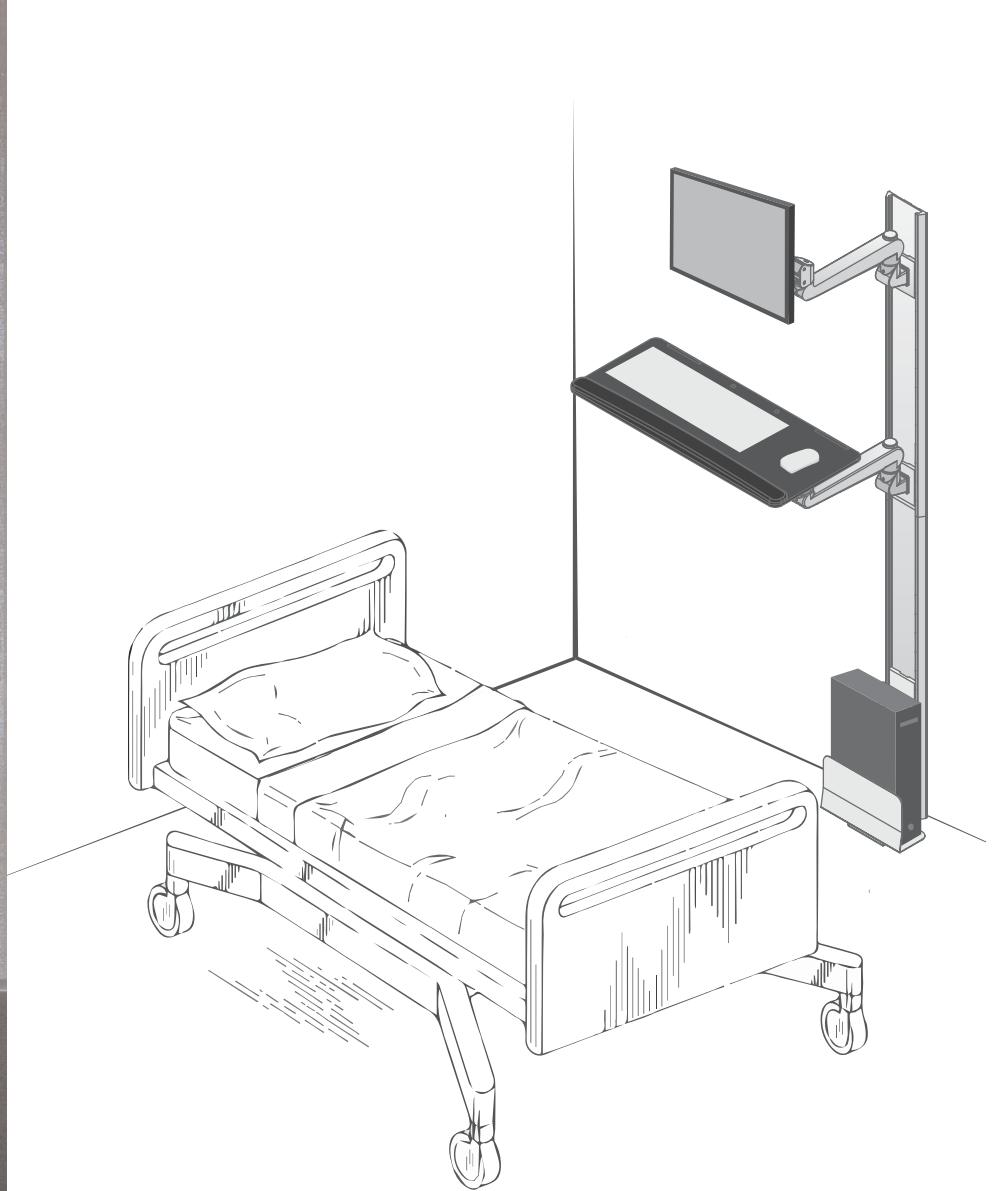
We understand the importance of delivering large projects on schedule. For this reason, ESI offers a reserved inventory program for projects totaling at least \$25,000 net. To help ensure that your project order can be delivered on time, contact our Customer Service Department to find out how to take advantage of this program.

A medical workstation, the Titan2-Edge, is mounted on a wall in a hospital room. The workstation features a monitor, a keyboard, and a CPU unit. The room has a purple and black wall, a white hospital bed, and a window with blinds. The workstation is labeled "Titan2-Edge".

Titan2-Edge


**HIPPA COMPLIANT**  
The TITAN2-EDGE  
can be retrofitted  
with the LOCKING  
CPU to attain HIPPA  
compliance.





The TITAN-EDGE, track Mounted Workstation saves space and provides a convenient place for multiple users to access and input patient information quickly. All components are modular and interchangeable, enabling reconfigurations to meet changing needs.



A modern, silver-colored standing desk system, the Titan2-Edge, is shown in a room with blue and white geometric wallpaper. The desk is fully extended, featuring a black monitor arm holding a large black monitor, a keyboard tray with a white keyboard and mouse, and a central vertical column. The base is a black and silver motor unit.

Titan2-Edge

PAC-CPUMINI  
INCLUDED WITH TITAN2-EDGE



## TITAN SERIES

### TRACK-MOUNTED WORKSTATION

- Keyboard arm and monitor arm can be positioned anywhere along the wall track
- For left or right-handed users
- Keyboard tray folds up or down to save space
- Monitor weight range: 6.5 - 17.6 lbs
- Monitor arm height adjustment range: 12.5"
- Monitor arm extension: 22.5"
- Keyboard arm extension: 23"
- Includes track covers to conceal cords

## TITAN2-EDGE

### DUAL TRACK (PICTURED)

- Two 31.5" aluminum alloy wall tracks (63" total)
- Edge monitor arm (pg. 16)
- Keyboard platform
- PAC-CPUMINI CPU holder

MODEL #	LIST PRICE
<b>TITAN2-EDGE</b>	<b>\$1,355</b>

## MINI CPU HOLDER

- Adjustable width:
  - 3.25" - 6"
- Load capacity:
  - 55 lbs
- Fits CPUs 5" to 20" in overall height

MODEL #	LIST PRICE
<b>PAC-CPUMINI</b>	<b>\$97</b>

## LOCKING CPU

- Adjustable width:
  - 3.5" - 9.3"
- Adjustable height:
  - 12.5" - 22.5"
- Heavy duty tri-lobe shaped knob with special hex key

MODEL #	LIST PRICE
<b>PAC-CPULOCK</b>	<b>\$427</b>
<b>LT=CALL FOR ON HAND AVAILABILITY</b>	



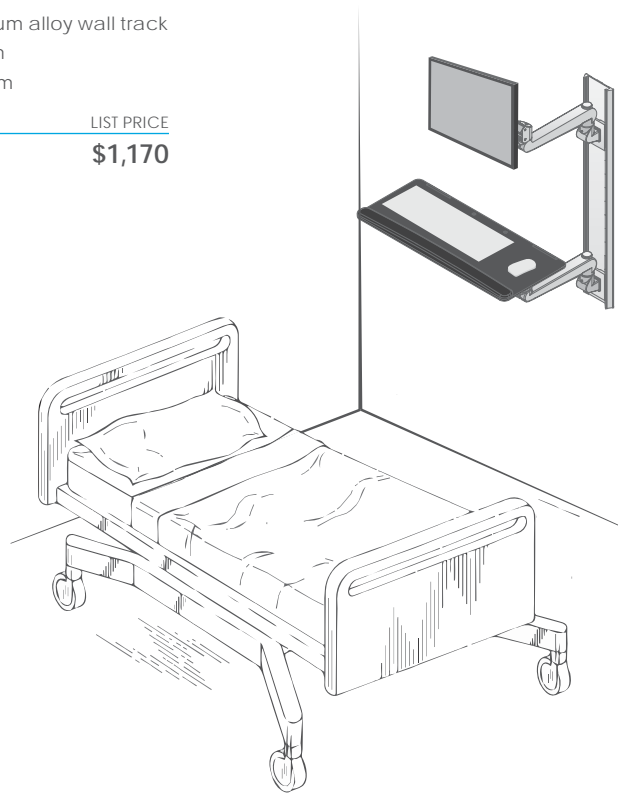




## TITAN-EDGE SINGLE TRACK

- One 31.5" aluminum alloy wall track
- Edge monitor arm
- Keyboard platform

MODEL #	LIST PRICE
TITAN-EDGE	\$1,170



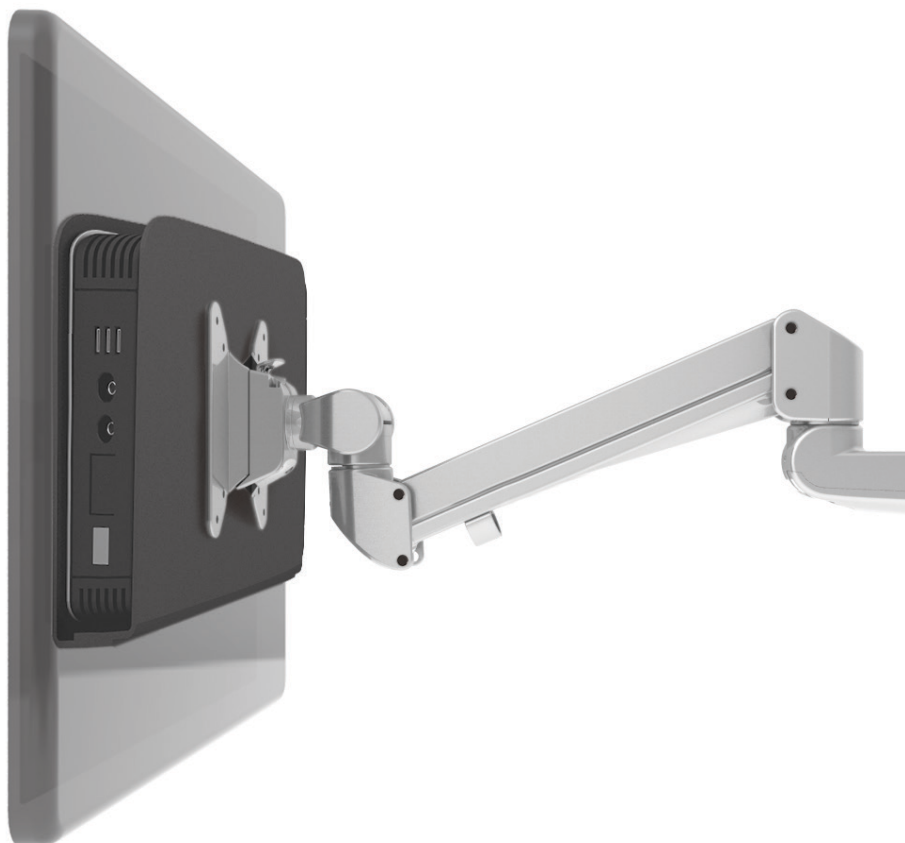
## CPU-TC

### THIN CLIENT CPU HOLDER

- Mounts between the monitor arm and monitor (see right)
- Adjustable width: 1.375" - 2.25"
- Conforms to VESA 75mm/100mm
- Adjustment knobs are tamper and vibration resistant
- Total weight: 3 lbs
- Monitor arm sold separately

MODEL #	LIST PRICE
CPU-TC <b>LT</b>	\$228

LT=CALL FOR ON HAND AVAILABILITY







## SIT-TO-STAND

### POLE MOUNTED WORKSTATION

- Pneumatic height adjustment
- Height adjustment range: 17"
- Keyboard platform: 26.5" x 10.5"
- Keyboard platform includes palm rest
- Palm rest can be positioned on the left or right side of the keyboard platform
- Monitor can be rotated for viewing in landscape or portrait orientation
- Arm can be adjusted 19.5" up and down the pole

## CLIMB1

### SINGLE MONITOR ARM

- Clamps to the back of the worksurface
- Designed for worksurfaces 30" deep or less
- 6" of clearance is needed underneath the worksurface for the desk clamp
- Monitor can be adjusted 12" vertically along the mount
- Weight capacity: 20 lbs

## CLIMB2

### DUAL MONITOR ARM

- Clamps to the back of the worksurface
- Designed for worksurfaces 30" deep or less
- 6" of clearance is needed underneath the worksurface for the desk clamp
- Pneumatic height adjustment
- Weight capacity: 16 lbs
- Monitors are fixed at an 8° angle toward each other
- Monitors can move horizontally 7.5"

MODEL #	LIST PRICE
CLIMB1-SLV	\$792
CLIMB-GM GROMMET MOUNT	\$36

MODEL #	LIST PRICE
CLIMB2-SLV	\$946
CLIMB-GM GROMMET MOUNT	\$36





LIFT-WB

# SIT TO STAND

Easily retrofit virtually any fixed height desk with sit-to-stand workstations that support laptops, monitors, and keyboards.

## SIT-TO-STAND

### SINGLE COLUMN WORKSTATION

- Pneumatic height adjustment
- Weight capacity: 20 lbs
- Height adjustment range: 16"
- Top platform: 27" X 15.75"
- Top platform includes grommet hole for cable management
- Keyboard platform: 27" X 10.5"
- Keyboard platform includes palm rest
- Palm rest can be positioned on left or right side of keyboard platform

## LIFT

### DESK CLAMP

- Clamps to the back of the worksurface
- Can mount to worksurfaces 30" deep or less
- 4" of clearance is needed underneath worksurface for clamp

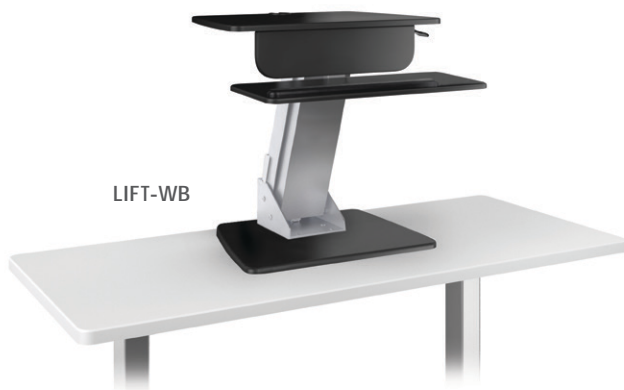
MODEL #	LIST PRICE
 <b>LIFT-SLV</b>	<b>\$528</b>

## LIFT-WB

### WEIGHTED BASE

- Compatible with worksurfaces 30" deep or more
- Weighted base allows for flexible positioning and placement on a worksurface

MODEL #	LIST PRICE
 <b>LIFT-WB-SLV</b>	<b>\$639</b>







Edge-Wall

Tech-Dock

Core-WM

# HEIGHT ADJUSTABLE TABLES

Height adjustable tables give users the flexibility to sit or stand at their workspace.

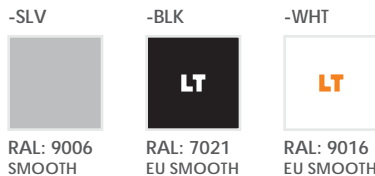


## AVAILABLE WORKSURFACES



## BASE FINISH OPTIONS

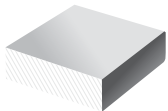
COMPLETE THE BASE MODEL # WITH THE 3 LETTER FINISH CODE



**LT** = CALL FOR ON-HAND AVAILABILITY

## EDGE DETAIL OPTIONS

WORKSURFACES SHIP WITH STANDARD SQUARE PROFILE EDGE AND COORDINATING 3MM EDGE BAND. VISIT [ESIERGO.COM](http://ESIERGO.COM) FOR MORE OPTIONS AND INFORMATION.



SQUARE PROFILE

## CORE SINGLE COLUMN ORDERING GUIDE NON GSA

	DIMENSIONS		BASE MODEL # SPECIFY FINISH	BASE LIST	SURFACE MODEL # SPECIFY LAMINATE	SURFACE LIST
	W	D				
RECTANGLE	36	24	CORE-___	\$872	2R3624__	\$368
	42	24	CORE-___	\$872	2R4224__	\$403
	36	30	CORE-___	\$872	2R3630__	\$398
	42	30	CORE-___	\$872	2R4230__	\$442
	36	24	CORE-WM-___	\$872	2R3624__	\$368
	42	24	CORE-WM-___	\$872	2R4224__	\$403
	36	30	CORE-WM-___	\$872	2R3630__	\$398
	42	30	CORE-WM-___	\$872	2R4230__	\$442
SEC	48	24	CORE-___	\$872	2EC424224__	\$782
	42	24	CORE-___	\$872	2EC484824__	\$796
120 DEGREE	36	24	CORE-___	\$872	120-3624__	\$1,151
	42	24	CORE-___	\$872	120-4224__	\$1,342
	36	30	CORE-___	\$872	120-3630__	\$1,157
	42	30	CORE-___	\$872	120-4230__	\$1,348

## STANDARD WORKSURFACES

Typical lead time is 10-14 business days for production of worksurfaces. Please indicate laminate choice by adding the 2-letter code at the end of the worksurface model #.

**WORK SURFACES ARE NOT SOLD SEPARATELY AND MUST BE PURCHASED WITH A TABLE BASE.**

**2R4830KM** = 48" x 30" Rectangle Worksurface in *Kensington Maple*

## LAMINATE OPTIONS

Worksurfaces are available in 38 standard Wilsonart® laminate options and 3 standard Formica® laminate options. Additional non-standard laminate options are available from Formica®, Nevamar®, Pionite®, and more. Call our Customer Service Department for more information or visit [esiergo.com](http://esiergo.com) for more information.



## WOW SERIES

### WORKSTATION ON WHEELS

- Pneumatic lift platform with wire controller
- 5-star base with heavy-duty casters
  - 2 lockable
- Includes cable management system
- Platform measurement: 26.5" W x 22.5" D
- Platform height adjustment: 28"-41"
- Base measurement: 28" diameter
- Weight capacity: 20 lbs (including surface)



## WOW

### COMPLETE WORKSTATION

Includes:

- Adjustable CPU holder
- Platform with palm rest
- Fixed monitor mount
- CPU holder dimensions:
  - Adjustable height: 13" - 21"
  - Adjustable width: 2.5" - 8.25"

MODEL #	LIST PRICE
WOW	\$1,402









## WOW01 BASE MODEL

- Effortless height adjustment
- Ideal for mobile height adjustability
- Additional accessories available

MODEL # LIST PRICE

**WOW01** **\$907**



## MONITOR MOUNT

- Fixed height
- Monitor Tilt: +90°/-25°
- 90° portrait/landscape adjustment
- 90° side-to-side rotation



MODEL # LIST PRICE

**WOW-MR** **\$198**

## CPU HOLDER

- Adjustable CPU Holder for WOW
- Nonporous foam material prevents CPU damage
- Can be cleaned and sanitized to maintain a germ-free environment



MODEL # LIST PRICE

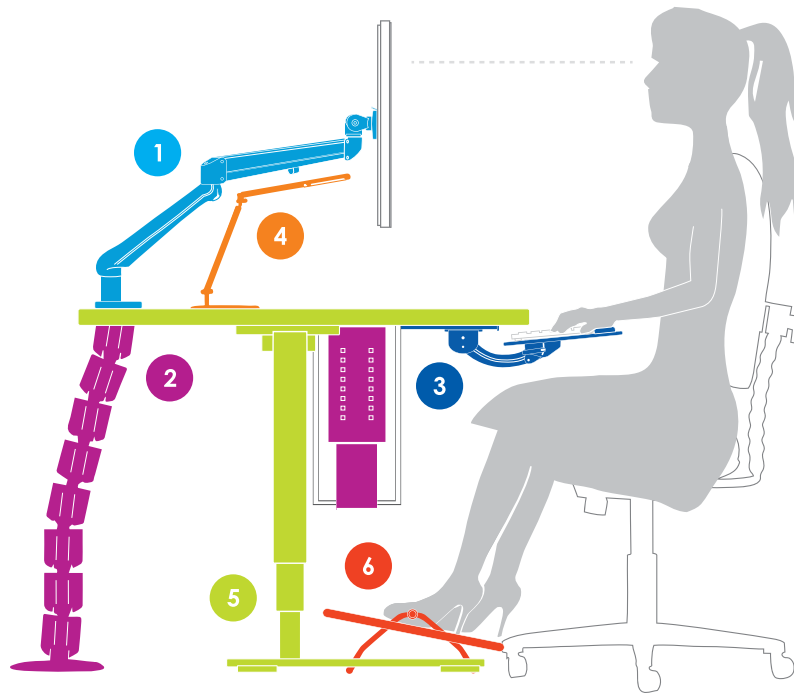
**WOW-CPU** **\$237**







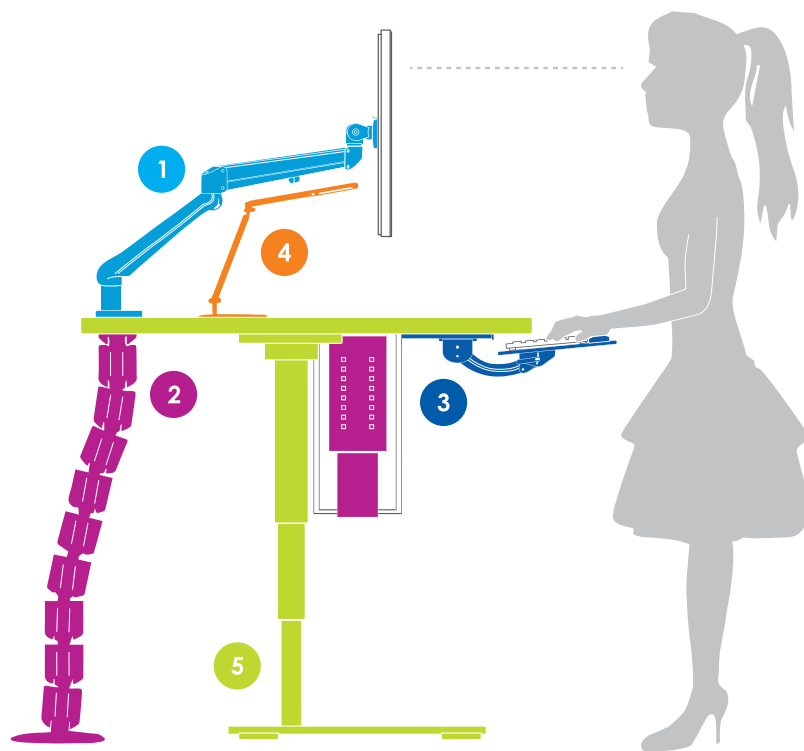
# work.space.o.lo.gy<sup>®</sup>



**1 Adjustable monitor arms** help eliminate the tendency to sit in awkward positions by maintaining the proper viewing distance, height and angle of the monitor. Monitor arms keep the neck, shoulders and back in the proper posture to reduce muscle fatigue. They also free up the workspace to reduce clutter and increase efficiency. Using dual monitors can increase productivity over a single monitor.

**2 CPU holders** raise the CPU off the floor, making them easier for the user to reach and reducing the tendency to stretch into an awkward position. CPU holders also help free up leg room under the user's workstation.

**3 Adjustable keyboard platforms** help maintain a neutral wrist position and eliminate strain, improper posture, and discomfort. Proper keyboard positioning can help eliminate musculoskeletal disorders.



**4 Energy efficient task lighting** can reduce energy consumption and costs. Adjustable task lights give the user maximum control of their own workspace lighting for optimal comfort, and help reduce eyestrain and fatigue.

**5 Height adjustable workstations** give users the flexibility to change positions frequently and easily throughout the day, which improves health and productivity.

**6 Footrests** can help decrease circulation problems that can occur from long periods of sitting or inactivity. By supporting the legs, footrests can relieve pressure on the lower back.

**7 Access to natural light** improves productivity and well-being.

Create high performance work environments with work tools that enhance worker comfort and productivity.



# Edge

## MONITOR ARM SERIES

Supporting large monitors and providing proper ergonomic support on deep worksurfaces and corner applications, the **Edge2** monitor arm is a great fit for most work spaces.

### Move Up

Reuse most of the parts in your single **Edge** arm when you convert up to the dual **Edge2** with our simple kit.

### Lock-Out

The Edge series monitor arms include a 180 degree lock-out feature. This prevents the arms from getting pushed back too far and bumping into a rear wall or glass panel.

### EDGE SINGLE MONITOR ARM

MODEL #	LIST PRICE
● <b>EDGE-SLV</b>	<b>\$346</b>

### EDGE DUAL MONITOR ARM

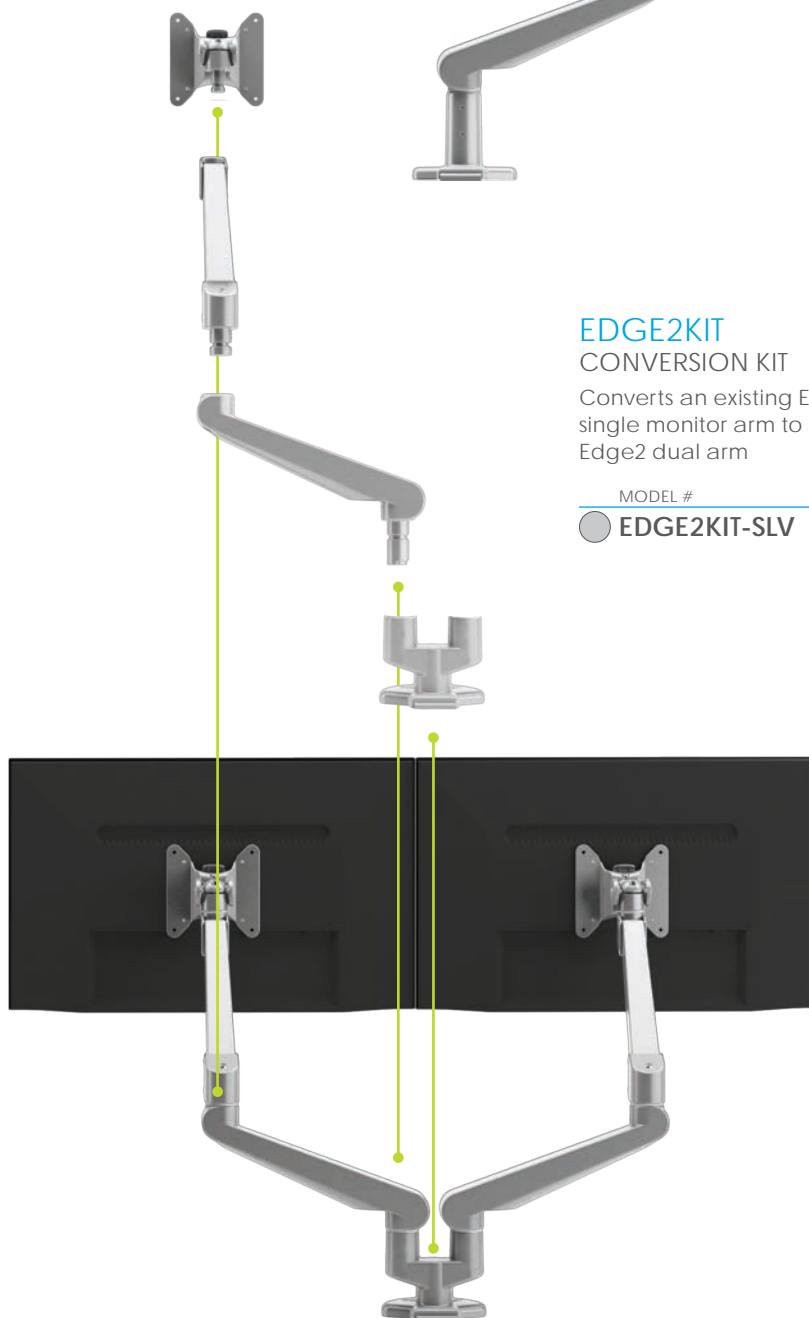
MODEL #	LIST PRICE
● <b>EDGE2-SLV</b>	<b>\$641</b>



### EDGE2KIT CONVERSION KIT

Converts an existing Edge single monitor arm to an Edge2 dual arm

MODEL #	LIST PRICE
● <b>EDGE2KIT-SLV</b>	<b>\$348</b>





## EVOLVE1-F MONITOR ARM

FOR SHALLOW WORKSURFACES

Evolve configurations using only fixed arms (F) rotate left and right along the pole, offering flexibility with lateral adjustments.



MODEL #	LIST PRICE
● EVOLVE1-F-SLV	\$299



## EVOLVE1-M MONITOR ARM

FOR SHALLOW WORKSURFACES

Evolve configurations that include a motion arm (M) offer dynamic height adjustment. That means the monitor can reposition up and down with the touch of a finger.



MODEL #	LIST PRICE
● EVOLVE1-M-SLV	\$378



## EVOLVE2-MS MONITOR ARM

FOR SHALLOW WORKSURFACES

Position virtually any monitor side-by-side with a Slider. The Slider offers 9" of additional horizontal adjustability.



MODEL #	LIST PRICE
● EVOLVE2-MS-SLV	\$757



## EVOLVE2-FMS MONITOR ARM

FOR DEEP WORKSURFACES

Evolve configurations including both a Fixed Arm (F) and Motion Arm (M) offer increased extension and adjustability.



MODEL #	LIST PRICE
● EVOLVE2-FMS-SLV	\$863



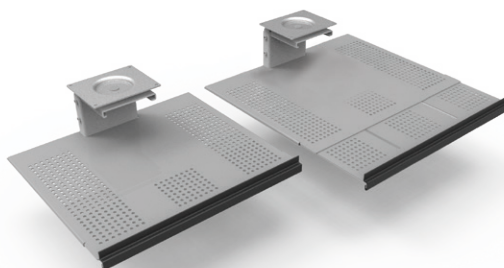


Tech-Dock

## TECH DOCK

### SLIDING TECH TRAY

- Tech Dock is 15" in width and adjusts from 12" - 17" in depth
- Mounts underneath the worksurface on an 18.75" glide track
- Fixed mounting option without glide track
- Rubber coated grip
- Convenient cable access
- Adjustable height of 3.5" - 5" under a worksurface

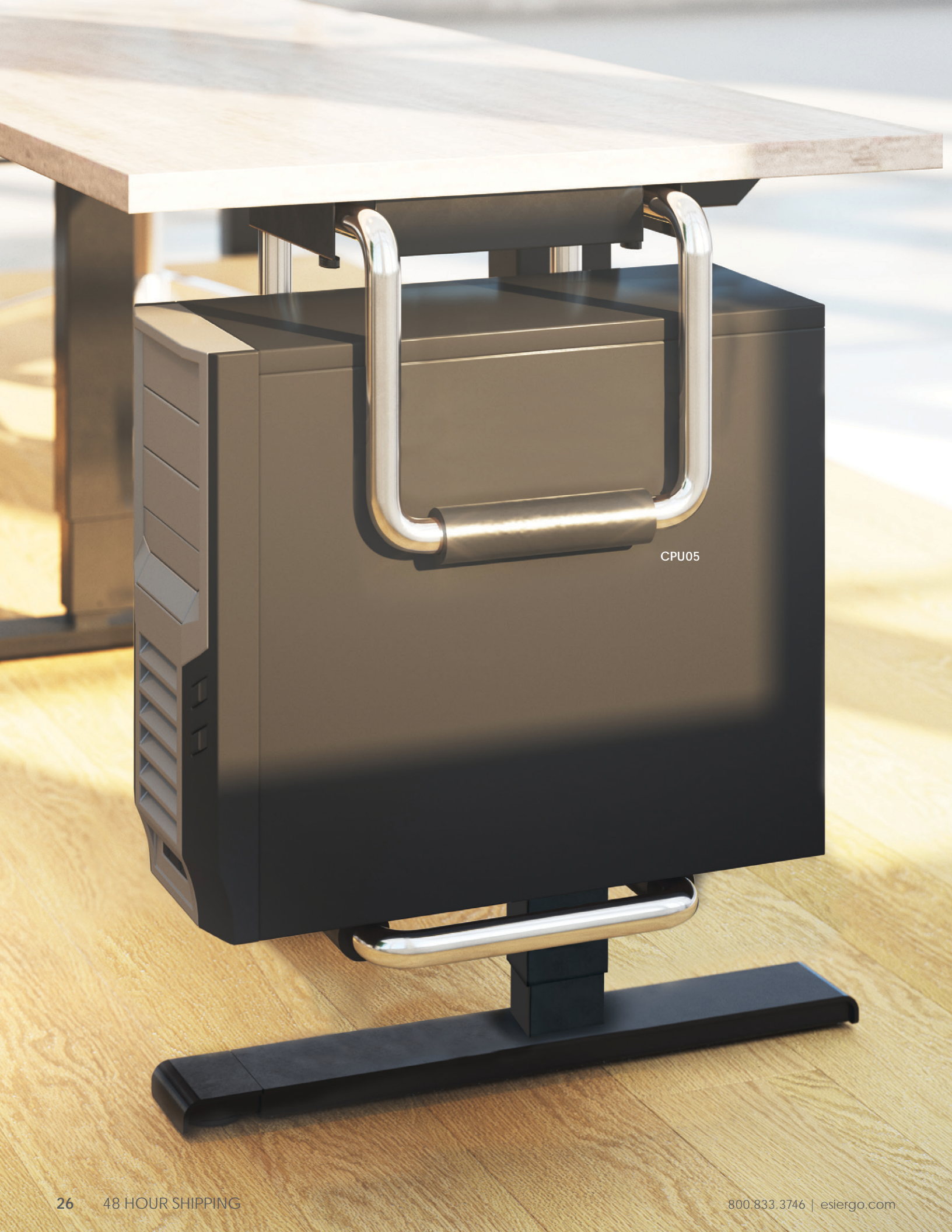


### Glide and Swivel

The Tech-Dock can swivel 360° under the worksurface for increased accessibility, with or without the glide track attached.

MODEL #	LIST PRICE
TDock-SLV	\$131





CPU05



## CPU CART

### MOBILE CART

- Fits CPU's ranging from 3.8" - 9" wide
- Load capacity: 160 lbs
- CPU sits in adjustable tray
- 4 swivel caster wheels (2 locking)
- Easy to assemble; no tools required to make adjustments

MODEL #	LIST PRICE
CPUCART-1	\$143



## CPU01

### SIMPLE

- 360° swivel
- 17.75" glide track
- Adjustable 60" straps
- Load capacity: 125 lbs
- Nylon security bands

MODEL #	LIST PRICE
CPU01	\$159



## CPUMINI

### SMALL PROFILE

- 360° swivel
- 13.4" ball bearing glide track
- Adjustable width: 3.25" - 6"
- Adjustable height: 16" - 23"
- Load capacity: 55 lbs
- Fits CPUs 5" to 20" in overall height

MODEL #	LIST PRICE
CPUMINI	\$178



## CPU05

### HEAVY DUTY

- 360° swivel
- 17.75" glide track
- Adjustable width: 2.5" - 8.25"
- Adjustable height: 13" - 21"
- Load capacity: 100 lbs

MODEL #	LIST PRICE
CPU05	\$207

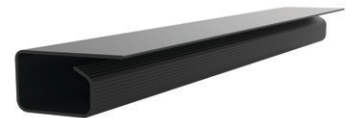


## CONCEAL

### CABLE MANAGEMENT SPINE

- Total height: 53.5"
- Total # of links: 23
- Links are detachable
- Weighted bottom
- Attaches to bottom of worksurface

MODEL #	LIST PRICE
CONCEAL-GRY	\$61
CONCEAL-BLK	\$61
CONCEAL-WHT	\$61
WHITE FINISH - CALL FOR ON HAND AVAILABILITY	



## TROUGH

### CABLE MANAGEMENT

- The Trough can be mounted to virtually any flat surface to organize cables.
- Set of (2) 18" Troughs
  - Can be mounted using heavy duty double sided tape or two screws provided

MODEL #	LIST PRICE
TROUGH	\$26





### Solution 1

Value engineered to provide proper ergonomic wrist positioning on a budget, the **Solution 1** offers complete keyboard stowage and spring assisted height adjustment.

### Save Space

Keyboard platforms help maximize the amount of available space on a worksurface.

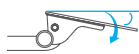

Solution 1

### Cut Corner

The **Solution 1** is also available with a cut corner keyboard platform (**Solution 1CC**), suited for diagonal corner and large radius worksurfaces.





Model #	SOLUTION 1 SOLUTION 1CC	SOLUTION 2 SOLUTION 2CC	SOLUTION ALL-FIT	SOLUTION 6CC
List Price	\$305	\$393	\$416	\$417
Recommended for	Straight edge worksurfaces (SOLUTION1) or diagonal corner worksurfaces (SOLUTION1CC)	Straight edge worksurfaces (SOLUTION2) or diagonal corner worksurfaces (SOLUTION2CC)	Shallow worksurfaces, benching applications, height adjustable tables	Straight edge worksurfaces or diagonal corner worksurfaces
Keyboard Platform	PL003-25 or PL003CC-25	PL003-25 or PL00325-CC	PL003-27N	PL003CC-27
Platform Description	25" keyboard platform, rectangle or cut corner	25" keyboard platform, rectangle or cut corner	27" keyboard platform with notch	27" keyboard platform cut corner
Articulating Arm	AA260	AA360	AA100	AA750DAT
Adjustment Type	Spring Assisted	Lift & Lock	Lift & Lock	Lift & Lock + Dial-a-Tilt
Glide Track	17"	21"	13"	21.75"
Clearance Required for Full Retraction	N/A	21"	13"	22"
 Positive Tilt	15°	15°	22.6°	10°
 Negative Tilt	15°	15°	12.4°	15°
Adjustment Range	6.25"	7"	6"	7.13"
Height Above Track	1.25"	2.5"	2.375"	2.25"
Height Below Track	5"	4.5"	3.625"	4.88"
Rotation on Glide Track	360°	360°	360°	360°
Positions Flush with Worksurface	●	●	●	●
Available in R-Series (Cut Corner Only)	●	●		

More information and options available - visit [esiergo.com](https://esiergo.com)



Pixie-LED

## PIXIE

The Pixie's circular light fixture diffuses soft, even light that can be positioned with absolute flexibility.

### USB Option

The Pixie series is available with or without a USB charging port.



LEDX includes USB charging port

MODEL #	LIST PRICE
PIXIE-LED-SLV	\$165
PIXIE-LEDX-SLV	\$207



Lustre-wht

## LUSTRE

The Lustre's curvilinear design delivers a unique fusion of style and function.

### Flexible

The Lustre rotates, tilts, and telescopes at 2 points for complete control of the light source.

### "Touch & Hold" Dimmer

The Lustre includes a "Touch and Hold" Dimmer with 3 brightness settings.



Single touch control



Includes USB charging port



MODEL #	LIST PRICE
LUSTRE-SLV	\$571
LUSTRE-WHT	\$571



Vivid-LEX



Vivid-X

## VIVID SERIES

ESI's Vivid LED light is available with one or two articulating arms.

### "Touch & Release" Dimmer

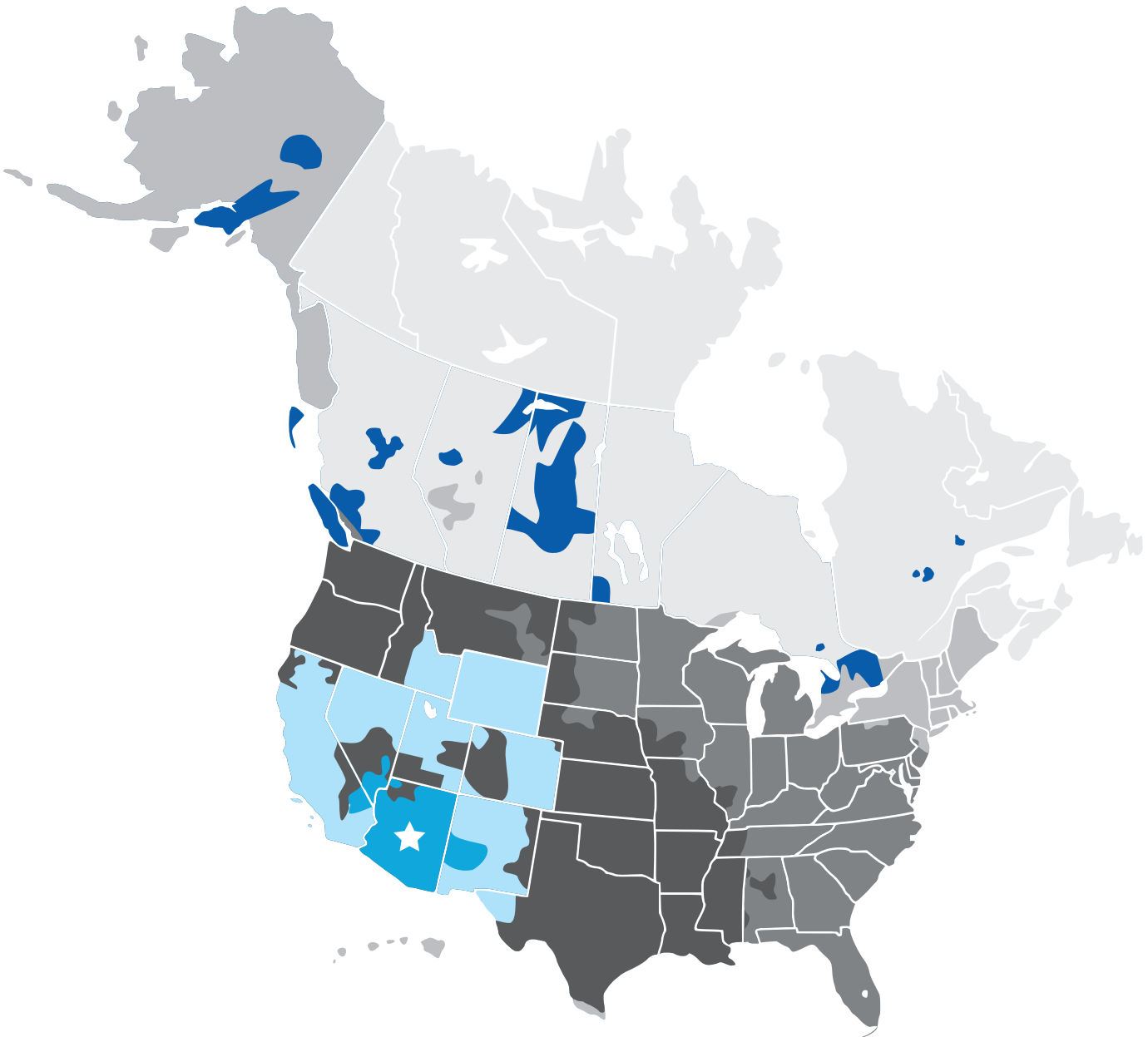
The Vivid includes a "Touch and Release" Dimmer with 3 brightness settings.

MODEL #	LIST PRICE
VIVID-X-SLV	\$371
VIVID-LEX-SLV	\$386

# ESTIMATED TRANSIT TIME

FROM MESA, ARIZONA

Estimated Transit Time is based on standard shipping rates.  
Expedited shipping is available. Contact our Customer Service  
Department for additional shipping options and pricing.



- |        |        |         |
|--------|--------|---------|
| 1 DAY  | 3 DAYS | 5 DAYS  |
| 2 DAYS | 4 DAYS | 6 DAYS  |
|        |        | 7+ DAYS |





**FACTORY & SHOWROOM**  
4030 EAST QUENTON DRIVE  
MESA, ARIZONA 85215

**CHICAGO SHOWROOM**  
MERCHANDISE MART  
SHOWROOM 10-100  
CHICAGO, ILLINOIS 60654

**P: 800.833.3746**  
[info@esiergo.com](mailto:info@esiergo.com)  
[esiergo.com](http://esiergo.com)



© 2017 ESI Ergonomic Solutions  
All rights reserved.